

PL1/K1

PORTABLE INDUCTION LOOP KIT

Over 10% of the population suffer from hearing impairment. Under the Disability Discrimination Act, anyone offering goods, facilities or services to the general public must make 'reasonable' adjustments to ensure they do not discriminate against such people. One of the easiest ways to meet this requirement is to have a portable induction loop system available and ready for use at all times.

Attractively designed in tough ABS plastic, C-TEC's PL1/K1 portable induction loop system is a truly portable and extremely durable audio frequency induction loop system, packed full of features and available at a very competitive price.

Fully compliant with BS7594 and EN60118-4, it is ideal for use in schools, shops, nursing homes, leisure centres, hotels, banks, GP surgeries, reception desks and many other private, public and civic applications.



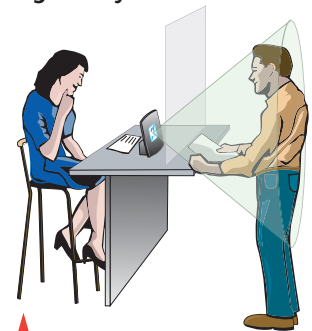
Simplicity itself : the rear of the amplifier includes short form user instructions detailing how the system works



- Ready for use in seconds
- Free-standing lightweight design - ideal for counter, table or desktop use
- Simple one button operation
- Generates a loop listening field of approximately 1.2m²
- Limited horizontal throw of loop field helps maintain privacy in applications where confidentiality is essential (i.e. banks, meeting rooms, police stations, etc)
- Excellent sound quality
- Integral high performance microphone accommodates different operator voice levels
- Plug-top charger included in all kits (amplifier charges fully overnight)
- Five years expected battery life under normal operating/charging conditions
- Integral cut-off timer (settable to 10, 30 or 60 minutes) helps prevent inadvertent battery discharge
- Remote microphone socket for optional tie/desk microphone
- Indicators provided for power on, input level, charging required and charging in progress
- PL1/K1 kit includes PL1 amplifier, plugtop charger, 'AFILS available' sticker and durable cardboard storage/carry case
- PL1/K2 kit includes all PL1/K1 contents plus a magnetic field strength meter / loop listener and a set of headphones for testing the unit is working correctly
- Both kits also available in durable plastic storage / carry cases - see overleaf for full PL1 Range parts listing



▲ Typical meeting room application

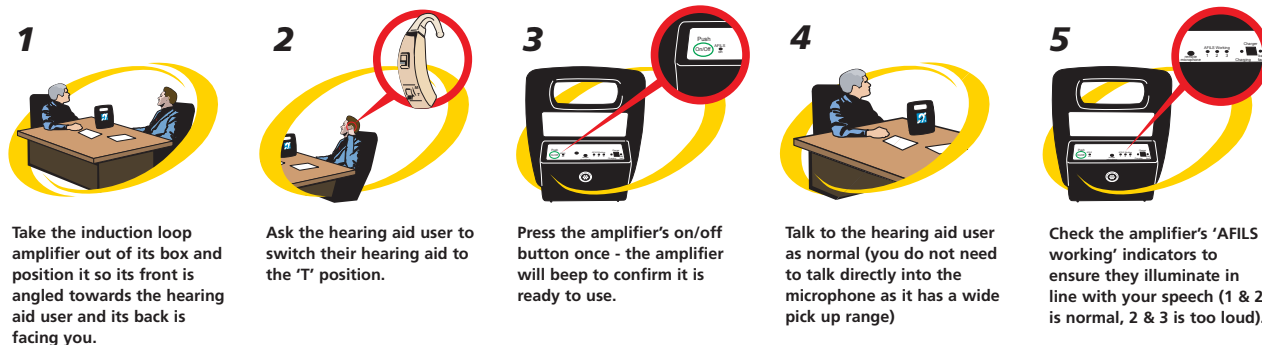


▲ Typical counter/ticket booth application

WHAT IS AN AUDIO FREQUENCY INDUCTION LOOP SYSTEM?

Audio frequency induction loop systems (AFILS) work by transmitting amplified sound to NHS hearing aids. Most hearing aids have a 'T' or 'MT' switch which allows them to pick up the electromagnetic signal generated by an induction loop system. The hearing aid converts this signal into a sound suited to its users specific hearing requirements, allowing them to participate more fully in general conversation, ordering goods or services, etc.

BASIC OPERATION



The above instructions assume the PL1 amplifier has sufficient charge. Note that full user instructions are supplied with the amplifier itself.

THE PL1/K RANGE

PL1/K1	Portable induction loop kit (supplied in a cardboard storage/carry case) Includes PL1 amplifier c/w battery & integral microphone, PL1/PSU1 plugtop charger and TEAR-P 'AFILS available' sticker.
PL1/K2	Portable induction loop kit with AFILS tester (supplied in a cardboard storage/carry case) Includes PL1 amplifier c/w battery & integral microphone, PL1/PSU1 plugtop charger, TEAR-P 'AFILS available' sticker, AHHM/H combined FoSmeter H magnetic field strength meter/loop listening device and HEAD1 headphones.
PL1/K3	Portable induction loop kit (supplied in a robust plastic storage/carry case) Includes PL1 amplifier c/w battery & integral microphone, PL1/PSU1 plugtop charger and TEAR-P 'AFILS available' sticker.
PL1/K4	Portable induction loop kit with AFILS tester (supplied in a robust plastic storage/carry case) Includes PL1 amplifier c/w battery & integral microphone, PL1/PSU1 plugtop charger, TEAR-P 'AFILS available' sticker, AHHM/H combined FoSmeter H magnetic field strength meter /loop listening device and HEAD1 headphones.
CASE1	Robust plastic storage/carry case
AMT	Remote desk/tie microphone
AHHM/H	FoSmeter 'H' combined magnetic field strength meter/loop listening device
HEAD1	Headphones for use with AHHM/H
TEAR-P	Spare 'AFILS available' sticker

KEY TECHNICAL SPECIFICATIONS

Coverage	1m operating range at 1KHz providing an AFILS field strength of >100mA/m
Battery type	Internal 12V VRSLA (Valve Regulated Sealed Lead Acid) battery
Plugtop charger	Only use the PL1/PSU1 charger included in our PL1/K1, PL1/K2, PL1/K3 and PL1/K4 kits
Distortion	<1% THD @1KHz, 1m distance & 100mA/M field strength
Internal microphone	0.5m optimum operating distance
Remote. mic. socket	3.5mm mono jack (disables internal mic. when inserted)
Automatic shut-off	Nominally set to 10 minutes, user adjustable to 30 minutes or 60 minutes
Frequency response	100Hz-5KHz frequency response
Compressor	Fully automatic (up to 5:1 max.)
Indicators	Power on, input level, charging required and charging in progress
PL1 Dimensions (WxHxD)	250 x 300 x 100mm approx.
PL1 Weight	1.7kg approx. (including battery)